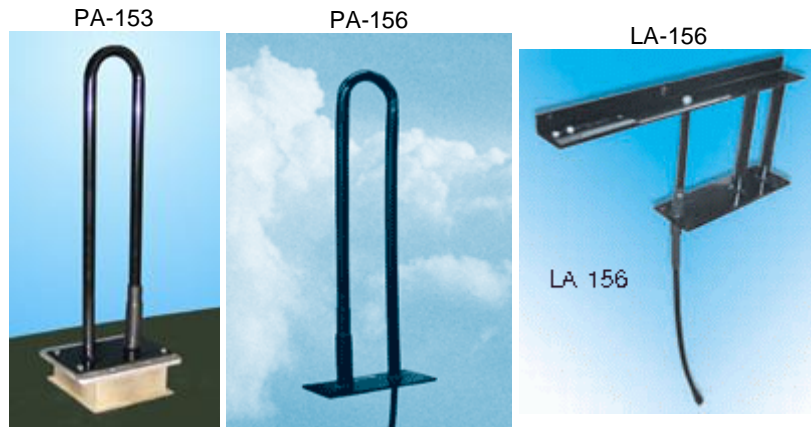




## 149-164 MHz Lokomotive antennas PA-153, PA-156, LA-156

107497, Moscow Chernicinsky pr-d 7/1  
Tel.: (495) 775-43-19, 462-44-14  
Tel./fax: 462-44-14  
E-mail: radial@radial.ru  
www.radial.ru



### Electrical specifications

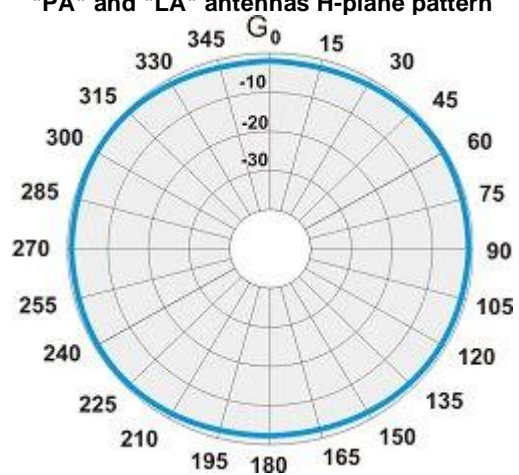
Model	PA-153	PA-156	LA-156
Operating frequency band, MHz	148.5-157	154-164	150-156
VSWR, not more than	1.5	1.5	1.5
Gain OFFSET, dBi	2.15	2.15	2.15
Sector in vertical plane , -3dB	65°	65°	65°
Impedance, Ohm	50	50	50
Max. power input, W	300	300	300

### Mechanical specifications

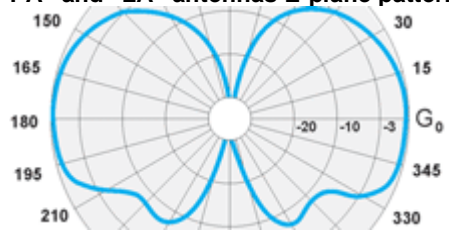
Model	PA-153	PA-156	LA-156
Weight, kg	0.8	0.6	0.9
Height/Length, mm	545	500	215
Construction material		Aluminium alloy	
Standard mounting		horizontal metal plane	
Rated wind velocity, m/s	55	55	55
Wind loading area, m <sup>2</sup>	0.022	0,02	0.016
Rated wind velocity with 0.5" icing, m/s	42	42	42
Temperature range, °C		from -50 to +50	
Connector		N-female	

Locomotive antenna PA-156 with full grounding provided by all-metal construction ensures safety for motorman and equipment. Antenna is highly efficient at different communication ranges. It is mounted directly onto locomotive top employing four 8 mm diameter mounting holes. Long coupling cable enables to connect antenna directly to equipment. Wide bandwidth of antenna PA-156 assumes operation of radio station at any frequency, allocated by your local authorities.

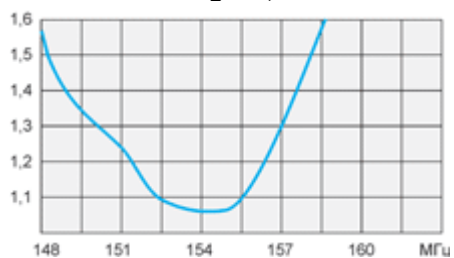
"PA" and "LA" antennas H-plane pattern



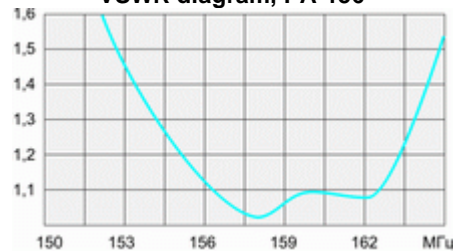
"PA" and "LA" antennas E-plane pattern



VSWR diagram, PA-153



VSWR diagram, PA-156



VSWR diagram, LA-156

