



## 400-470 MHz Panel antennas RAX-2U-70, RAX-4U-70

107497, Moscow Chernicinsky pr-d 7/1  
Tel.: (495) 775-43-19, 462-44-14  
Tel./fax: 462-44-14  
E-mail: radial@radial.ru  
www.radial.ru

### Electrical specifications

Model	RAX-2U-70	RAX-4U-70
Operating frequency band, MHz	RAX-2UL-70	RAX-4UL-70 400-430
	RAX-2UH-70	RAX-4UH-70 440-470
VSWR, not more than		1.5
Gain, dBi	9	12
Sector in vertical plane, -3dB, ± 1°	38°	18°
Sector in horizontal plane, -3dB, ± 5°		70°
Isolation	> 25 dB	> 25 dB
Impedance, Ohm		50
Max. power input, W		400
Lightning protection		yes

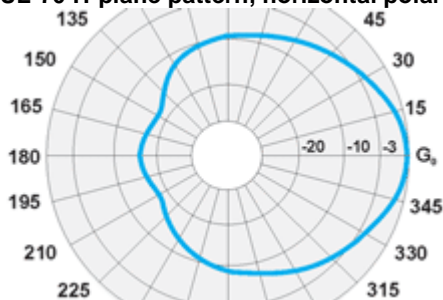


### Mechanical specifications

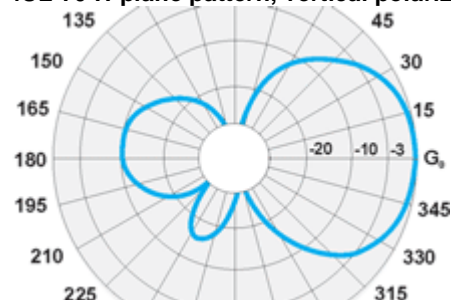
Model	RAX-2U-70	RAX-4U-70
Weight not more than, kg	9,5	20
Radiating unit construction material		aluminum
Radome material		ABS
Radome color		grey
Standard mounting		to a 45-60 mm dia. tube
Optional mounting		wall mount or frame side mount
Rated wind velocity, m/s		40
Wind loading area, m <sup>2</sup>	0.43	0.8
Temperature range, °C		from -50 to +50
Connector		7/16 DIN (N-female optional)
Size, mm	950x400x80	1900x400x80

Modern standards for digital telecommunication require application of separated receiving, what results in switching two antennas or antenna arrays for receiving. For similar cause but in case of limited space for placement of antennas it is possible to use double-input panel antennas with cross polarization. We have developed effective low-profile patch panel antenna with tilted polarization of ± 45 degrees. Antenna is protected by ABS radome with resistant to ultraviolet radiation. Recommended for applications like Tetra trunking systems and IMT-2000 standard cellular systems.

**RAX-4UL-70 H-plane pattern, horizontal polarization**



**RAX-4UL-70 H-plane pattern, vertical polarization**



**RAX-4UL-70 E-plane pattern, vertical polarization**

