



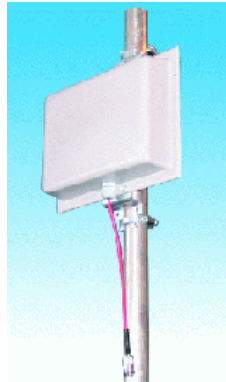
5750-5850 MHz Subscribers' antennas SU-12Z, SU-15Z, SU-18Z

107497, Moscow Chernicinsky pr-d 7/1
Tel.: (495) 775-43-19, 462-44-14
Tel./fax: 462-44-14
E-mail: radial@radial.ru
www.radial.ru

SU-12Z



SU-15Z



SU-18Z



Electrical specifications

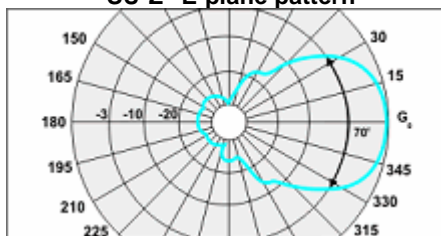
Model	SU-12Z	SU-15Z	SU-18Z
Operating frequency band, MHz	5750-5850	5750-5850	5750-5850
Gain, dBi	12	15	18
VSWR, not more than	1.5	1.5	1.5
Front-to-back ratio, dB	35	39	30
Polarization	vertical	vertical	vertical
Max. power input, W	10	10	10
Sector in H-plane (-3 dB)	26°	12°	6°
Sector in E-plane (-3 dB)	70°	70°	70°
Impedance, Ohm	50	50	50

Mechanical specifications

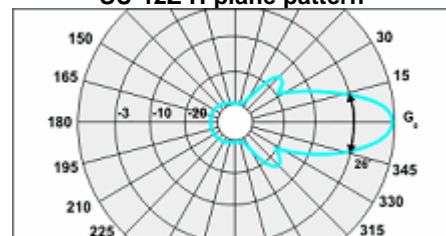
Model	SU-12Z	SU-15Z	SU-18Z
Dimensions (LxWxH), mm	130x50x100	300x65x195	520x60x200
Weight, kg	0.54	1.1	1.5
Rated wind velocity, m/s	55	55	43
Radiator	PCB	PCB	PCB
Radome	grey, ABS	grey, ABS	grey, ABS
Mounting	On a wall or on a mast with "Norma", CP-55D, CP-1150, CP-220		
Connector	N-female on a cable		

As for the portion of the frequency range of 5,75-5,85 GHz, it is presented by our new subscribers' antennas of the series named "SU". The models SU-12Z (12 dBi), SU-15Z (15 dBi), SU-18Z (18 dBi) possess all the advantages of the high-efficient antennas of the point-to-point type: a high gain value, the temporal and the climatic stability of the characteristics, a convenience of the mounting (on the wall or on the pipe-mast) and a convenience of the capsulation (a cable output). The cable output is implemented on the high-quality cable of Huber-Suhner production and on connector of Rosenberger production what ensures a stability of the characteristics.

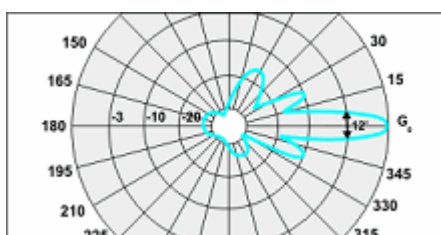
"SU-Z" E-plane pattern



SU-12Z H-plane pattern



SU-15Z H-plane pattern



SU-18Z H-plane pattern

