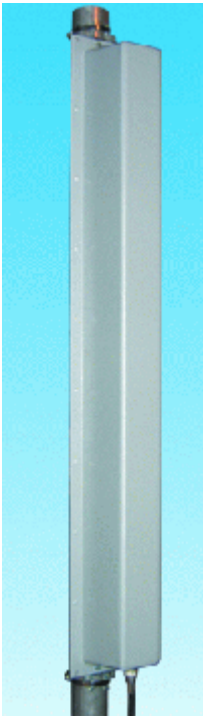




WLAN 2400-2485 MHz Panel antennas horizontal polarization RAH-15W-90

107497, Moscow Chernicinsky pr-d 7/1
Tel.: (495) 775-43-19, 462-44-14
Tel./fax: 462-44-14
E-mail: radial@radial.ru
www.radial.ru



Electrical specifications

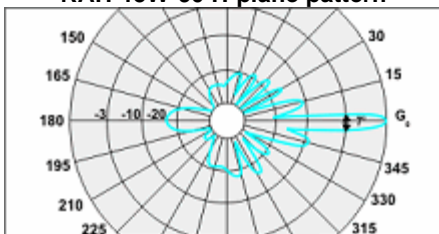
Model	RAH-15W-90
Operating frequency band, MHz	2400-2485
Gain, dBi	15
VSWR, not more than	1.5
Front-to-back ratio, dB	15
Polarization	horizontal
Max. power input, W	10
Sector in H-plane (-3 dB)	7°
Sector in E-plane (-3 dB)	90°
Impedance, Ohm	50

Mechanical specifications

Model	RAH-15W-90
Dimencions (LxWxH), mm	138x103x1034
Weight, kg	2.6
Rated wind velocity, m/s	43
Radiator	copper
Radome	grey, ABS
Mounting	on a wall or on a mast 30-220 mm with "Norma" or CP-55D, CP-115, CP-220
Connector	N-female on a cable

This base antenna with the horizontal polarization is ideally suitable for sectoring the servicing areas. The width of the radiation pattern by the level -3 dB is equal to 90°. By its construction this antenna is represented by an antenna array whole elements of which are fed in parallel what makes it possible to ensure the direction of the main lobe to be strictly horizontal within the whole working frequency band. The feeding circuit is made on the printed circuit board made of the high-quality SHF material.

RAH-15W-90 H-plane pattern



RAS-15W-90 E-plane pattern

