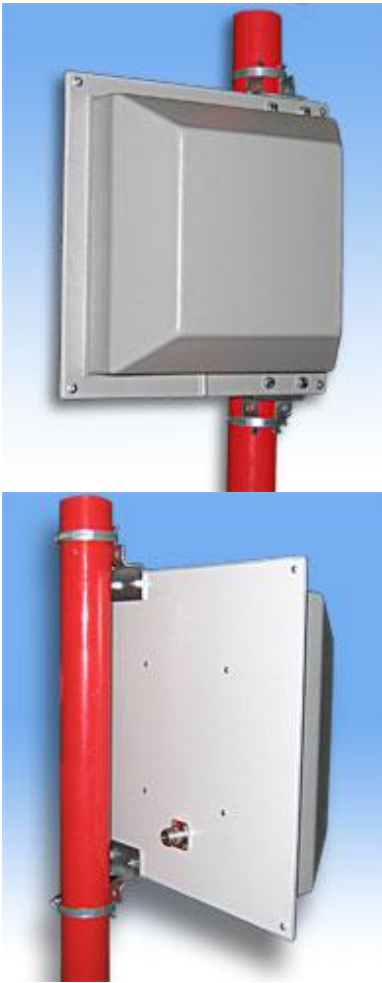




Yota 2500-2600 MHz Subscribers antenna SU-15Yota

107497, Moscow Chernicinsky pr-d 7/1
Tel.: (495) 775-43-19, 462-44-14
Tel./fax: 462-44-14
E-mail: radial@radial.ru
www.radial.ru



Electrical specifications

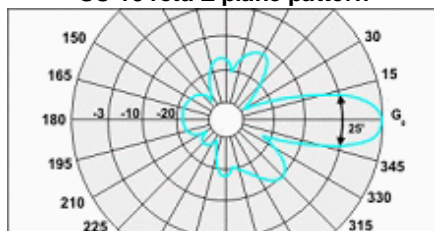
Model	SU-15Yota
Operating frequency band, MHz	2500-2600
Gain, dBi	15
VSWR, not more than	1.5
Front-to-back ratio, dB	23
Polarization	vertical
Max. power input, W	10
Sector in H-plane (-3 dB)	25°
Sector in E-plane (-3 dB)	25°
Impedance, Ohm	50

Mechanical specifications

Model	SU-15Yota
Dimensions (LxWxH), mm	294x103x294
Weight, kg	1.05
Rated wind velocity, m/s	55
Radiator	copper
Radome	ABS
Mounting	on a mast (30-220 mm) with "Norma" or CP-55D, CP-115, CP-220
Connector	N-female on a cable

The directional subscribers antenna SU-15Yota with the gain 15 dBi, have a performance which is suitable for all kinds of the weather conditions due to the frost-resistant radome made of ABC-plastic. Because of its construction (arrays of active "patch" and passive elements) the antennas have an increased gain if compared with the classic flat antennas of the same sizes. The cable output is implemented on the high-quality cable of Huber-Suhner production and on a connector of Rosenberger production what ensures a stability of the characteristics.

SU-15Yota E-plane pattern



SU-15Yota H-plane pattern

