



**400-470, 420-490 MHz
Isolators "regular"
IF-1(2)UL-50(125)R/2, IF-1(2)UH-
50(125)R/2**

107497, Moscow Chernicinsky pr-d 7/1
Tel.: (495) 775-43-19, 462-44-14
Tel./fax: 462-44-14
E-mail: radial@radial.ru
www.radial.ru

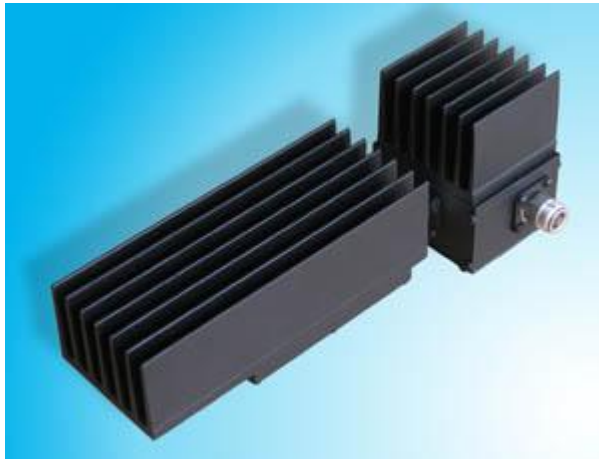
IF-1U-50R/2



IF-2U-50R/2



IF-1U-125R/2



IF-2U-125R/2



Electrical specifications

Model	IF-1UL(UH)-50R/2	IF-2UL(UH)-50R/2	IF-1UL(UH)-125R/2	IF-2UL(UH)-125R/2
Operating frequency band, MHz	UL 400-470 UH 420-490	UL 400-470 UH 420-490	UL 400-470 UH 420-490	UL 400-470 UH 420-490
Insertion loss not more, dB	0.4	0.8	0.4	0.8
Isolation TX-TX not less, dB	27	55	27	55
Impedance, Ohm	50	50	50	50
VSWR, not more than	1.2	1.2	1.2	1,2
Input power not more than, W	50	50	125	125
Temperature range, °C	from -30 to +50	from -30 to +50	from -30 to +50	from -30 to +50

Mechanical specifications

Model	IF-1UL(UH)-50R/2	IF-2UL(UH)-50R/2	IF-1UL(UH)-125R/2	IF-2UL(UH)-125R/2
Weight, kg	0.25	0.49	0.93	1.45
Connectors	N-female	N-female	N-female	N-female
Length/Width/Depth , mm	102x45x63	165x45x63	203x87x107	210x90x165

Typical isolator characteristics

